



AMWAJ ALMOHEET TECHNICAL SERVICES L.L.C

COMPANY PROFILE

SUSTAINABILITY; IT'S IN OUR NATURE "BUILDING SWIMMING POOL...
FOR FUTURE GENERATIONS" SWIMMING POOL, FOUNTAIN, STEAM
ROOM AND SAUNA



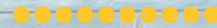
References

PUBLIC AND PRIVATE SWIMMING POOLS Thermalsolbad
Salzgitter-Bad Riccione public swimming pool Hallenbad
Schrobenhausen Piscine municipale de Nerac Ypres Aquatic
Center



SPORTS CENTRES

XVIII FINA World Championships XVII FINA World Championships
Rio Olympics Y40 The Deep Joy Hanoi Aquatic Center



AQUAPARKS

Perth Aqua Park, Dubai Aquarium, LEGO Park, Aquapark Riga,
Haus des Meeres, Aquarium Acquarena in Bressanone

Introduction	2
About Us	5
Our Services	9
Where We Worked	11
Our Mission	12
Our Vision	13
Our Values	14
Commercial license	
Partners	15
Head Staff	16
Our Principles	
Culture & Heritage	18
Sustainability	19
Longevity	22
Viability	23
Education & Awareness	24
Health & Recreation	25
Uniqueness	27
Client Focused	28
Our Clients	100

TABLE OF CONTENTS



Introduction

Crafting Luxury Swimming Pools & Landscapes with Excellence

At AMWAJ ALMOHEET, we specialize in creating exceptional swimming pools, breathtaking landscapes, and elegant interiors that redefine outdoor living. With over 20 years of industry expertise, we have established ourselves as a trusted name in swimming pool construction, garden design, and interior enhancement across the UAE.

Founded in 1998, our journey began in Ajman with the East Gulf Company for General Projects. Over the years, we have combined technical precision, artistic vision, and engineering excellence to deliver bespoke, high-quality solutions that transform ordinary spaces into extraordinary retreats.

Our team of experts takes a personalized approach to every project, ensuring that each pool is not just built-but crafted with attention to detail, durability, and aesthetics. From contemporary infinity pools to natural lake-style designs with waterfalls, our goal is to turn your vision into a stunning reality.

With AMWAJ ALMOHEET, you can expect:

- Custom-designed swimming pools that reflect your style and space.
- Seamless integration of landscapes and water features.
- High-quality construction for durability and longevity.
- Transparent pricing and expert consultation for hassle-free execution.

Let us bring your dream outdoor space to life-where luxury meets craftsmanship.



Project Profiles

Swimming pool

Fountain

Fountain

steam & sauna room

Under construction work .

Fine Art Work

Partners in filed



CONTACT DETAILS

COMPANY NAME AMWAJ ALMOHEET TECHNICAL
SERVICES & SWIMMING POOL

ADDRESS DUBAI-NAHDA-SAHEEL-1 BUSINESS
TOWER

TEL 0508992628

FAX 042564449

PO. BOX 9666

MANAGER ELSAYED ABDLMONEM ELSAYED

E-MAIL SALES@AMWAJALMOHEET.COM

WEBSITE WWW.AMWAJALMOHEET.COM

The background of the slide features a high-angle, artistic rendering of a swimming pool. The pool is a vibrant blue, with a circular drain visible in the lower-left corner. Adjacent to the pool is a light-colored concrete patio. On the patio, there are two sets of outdoor furniture: one with a square table and four chairs, and another with a rectangular table and four chairs. A low, white rectangular wall separates the patio from the pool. In the background, beyond the pool, there are rolling hills under a clear sky. A large, dark blue, curved graphic element sweeps across the upper left portion of the image, partially obscuring the sky and the top of the pool area.

About Us:


AMWAJ ALMOHEET was founded after a long-term collaboration among swimming pool professionals. The result is a rare balance of professional expertise and extensive practical experience, particularly in the planning, development, and management of landscaped areas.

Additionally, our background in fine art and project construction management gives AMWAJ ALMOHEET a strong national presence. This balance allows us to evaluate each swimming pool project and provide tailor-made solutions that are both cost-effective and practical to implement.

We have been specializing in swimming pool design since 1998, starting in the Emirate of Ajman with the East Gulf Company for General Projects. Our expertise spans across three main areas:

- Swimming Pools
- Garden Design
- Interior Design

Over the years, we have successfully completed numerous projects. If you're considering adding a swimming pool to bring relaxation into your life but are unsure where to start, we are here to help.


The background of the entire page is a photograph of a tropical resort. In the foreground, there is a large, clear blue swimming pool with some circular patterns on the bottom. Beyond the pool, there is a sandy area with several lounge chairs and a few people. In the background, there are many tall palm trees and a clear blue sky. A large, dark blue curved shape is overlaid on the right side of the image, partially obscuring the palm trees and the pool.

Finding the right people and direction for your dream swimming pool can be overwhelming. Many homeowners abandon the idea due to the complexities involved. However, your search ends here with AMWAJ ALMOHEET, for the following reasons:

- We have been in this field since 1998.
- Our reputation is backed by satisfied customers, consultants, and contractors.
- Our swimming pool construction is based on quality, sincerity, and customer satisfaction.

Unlike other builders who focus only on completing projects quickly, our approach is different. Many pool builders impose their designs on clients without considering their personal preferences, leaving homeowners dissatisfied. At AMWAJ ALMOHEET, we prioritize your vision.

Our pool builders consult with you to understand your exact needs, ensuring that your pool is custom-designed to match your style, material preferences, and overall home aesthetics. It's a personalized experience-just like ordering a customized gift or a pizza with your favorite toppings.



We also provide comprehensive information on pricing, features, and design options. Our experts offer practical advice on planning your dream swimming pool, ensuring that all necessary elements are included in the design.

Many builders rush through design appointments just to move on to the next project, prioritizing profit over quality. However, our team is dedicated to creating pools that are safe, durable, and seamlessly integrated into your home's landscaping.

If you're looking for a unique pool experience, we also offer a variety of themed designs, including lake-style pools. This style, mastered by our pool builders, creates a stunning natural effect, featuring waterfalls and large rocks that enhance the beauty and ambiance of your space.

With AMWAJ ALMOHEET, you can rest assured that your swimming pool will be designed and built with care, precision, and your vision in mind.



Bringing Pools to Life
with Smooth Flow

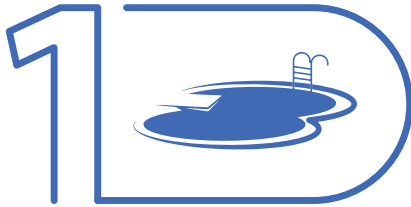


Our Services:

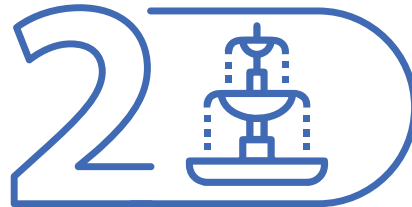
With extensive international experience in design, hands-on project execution, and management, we offer tailor-made solutions for swimming pools, fountains, waterfalls, Jacuzzis, steam rooms, and sauna projects. From initiation to completion and handover, we ensure excellence in every step.



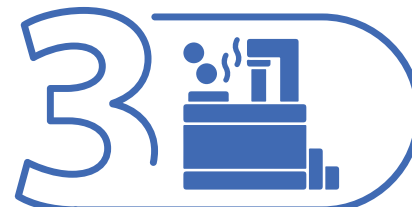
We provide the following services:



Swimming Pool Design & Construction



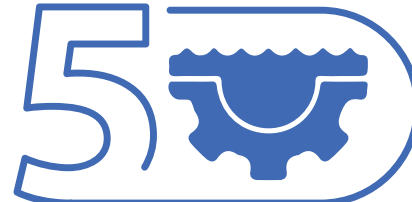
Fountain & Waterfall Installation



Jacuzzi Design & Setup



Steam Room & Sauna Installation



Pool Maintenance & Renovation

Our team is committed to delivering high-quality, cost-effective, and customized solutions to match your vision and needs.

A wide-angle photograph of a large, modern indoor swimming pool. The pool is filled with clear blue water, and a lane line is visible in the foreground. The pool is surrounded by a light-colored tiled deck. On the right side, there is a glass-enclosed staircase leading down into the pool. The background is dominated by a large wall of floor-to-ceiling windows that offer a view of a lush green forest. The ceiling is high and features a series of parallel white beams. The overall atmosphere is bright and airy.

AMWAJ ALMOHEET

serve hotels, resorts, real estate developers, and homeowners, specializing in pools, water features, and a wide range of related services.

MISSION

Creating appealing landscapes that are admired by people and reconnect them with nature

OUR



OUR

VISION

Building swimming pools with a focus on sustainability, contributing to a world with an ever-growing awareness of the environment.





Cooperation



Commitment



Creativity



Respect



Timeliness

OUR VALUES



PARTNERS



SHK
RASHEED BIN MOHAMMED
AL NUAMI



ENG
ELSAYED ABDULMONEM

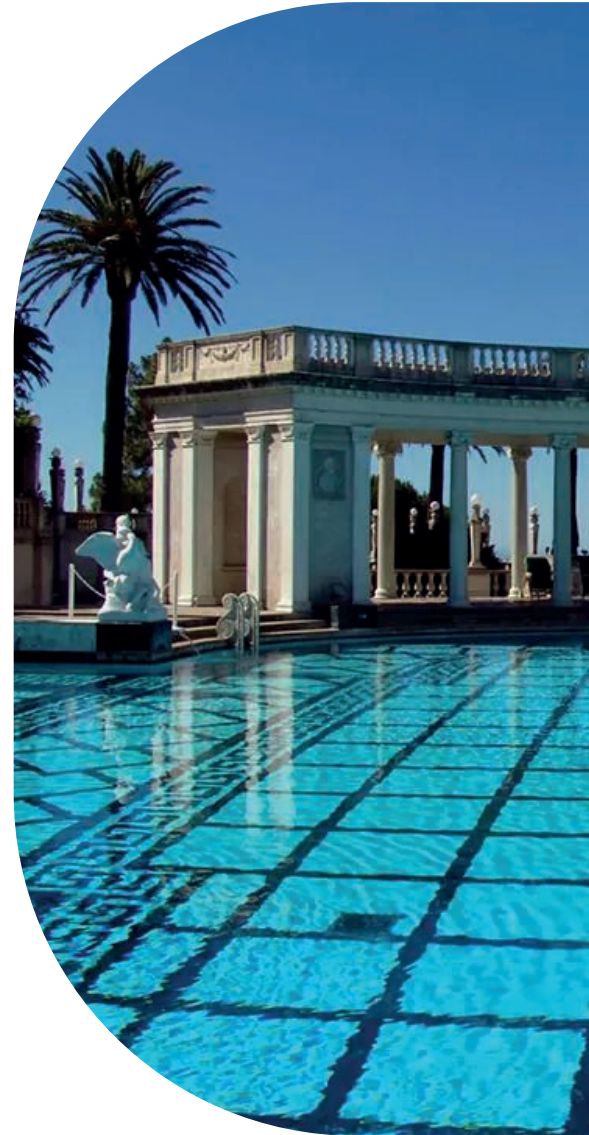
STAFF



OUR PRINCIPLES

Sense of place and time are vital to our plans and these are the main principles by which we design

- | | | |
|----------------------|----------------------------|-------------------|
| 01 Cultural Heritage | 04 Viability | 07 Uniqueness |
| 02 Sustainability | 05 Education and Awareness | 08 Client-Focused |
| 03 Longevity | 06 Health and Recreation | 09 Our Client |





Cultural heritage

Cultural heritage is more than tangible subjects like ruins and buildings. Intangible culture such as traditional music, sports, arts and craftsmanship are equally important to building each country's history, culture and lifestyle customs.

The threat of the disappearance of cultural heritage as a result of the progress of globalization has become evident around the world.

AMWAJ ALMOHEET is well aware of the importance of preservation of the local cultural heritage and our landscape designs respect and reflect this cultural heritage within the design-details itself and create opportunities for expression and conservation of intangible heritage.



Sustainability

The growing world population and the rapid pace of development put increasing pressure on natural resources. Today, we are beginning to realize that environmental resources are limited and highly sensitive to human activities. To ensure that future generations do not face worsening conditions, we must understand and embrace the principles of sustainability.

AMWAJ ALMOHEET has extensive experience in sustainability and is Estidama-accredited. Our landscape designs are not only visually appealing but also harmonized with the local climate and environment, requiring minimal resource inputs. As a result, our designs are functional, cost-efficient, visually pleasing, environmentally friendly, and maintainable.

Swimming facilities

"If there is magic on this planet, it is contained in water."

(Loren Eiseley)

A correctly functioning swimming pool depends on careful management of the water cycle. Using products that combine simplicity of installation with durability over time is the right solution for building a high-quality swimming pool (value), which is our mission in support of our customers.

Our technical support service to identify the best product and its correct application enables our partners to manage all construction activities with simplicity and success.

The possibility to customise AMWAJ ALMOHEET products is a powerful tool for strengthening recognisability on the market and ensuring a high degree of differentiation.

A geographically widespread sales structure is always at the service of anyone who chooses AMWAJ ALMOHEET as their preferred partner for water management systems.



Building World-Class Swimming Spaces

World Class

A modern indoor swimming pool with a curved white ceiling and large windows. The pool is divided into lanes by blue and red lane lines. The words "World Class" are written in large, metallic, 3D letters on the far wall. A red circular logo is visible on the wall near the pool.

Longevity

Within urban developments, the public realm serves a wide range of functions and faces immense pressure. Despite being a crucial component of urban planning, landscape design is often given minimal space and placed last in the design process. As a result, civil-engineered landscape solutions frequently shorten the lifespan of green spaces, preventing trees from reaching full maturity and landscapes from evolving into thriving ecosystems.

By being at the forefront of urban development and fostering collaboration among various disciplines, we create well-balanced landscape designs that establish a lasting natural legacy.



Control

Instrumentation for accurate and continuous monitoring of the key parameters



Showers and toilets

Partitionable cisterns and panels, designer drains for showers



Heat and Water Recovery

Solutions for heat recovery and grey water recovery



Drainage

Systems to drain water from paved surfaces



Ventilation and Radiant Systems

Room ventilation and radiant heating and cooling systems

Viability

Understanding how people's lives shape and are shaped by their environments provides unique insights into the design and planning of spaces at all scales. Whether working on multi-acre corporate landscape, a small urban park, or year-round resort, NLME carefully considers the site's physical surroundings, the client's needs, financial feasibility, long-term political implications, implementation strategies and ongoing maintenance.

Our interdisciplinary approach brings together the best practices in design, planning, and sustainability to create spaces that are not only functional and aesthetically pleasing but also enduring and adaptable.



Conveyance

Pipes and connections for the safe and long-lasting recirculation of pool water



Automation

Actuated valves for automated system hydraulics management



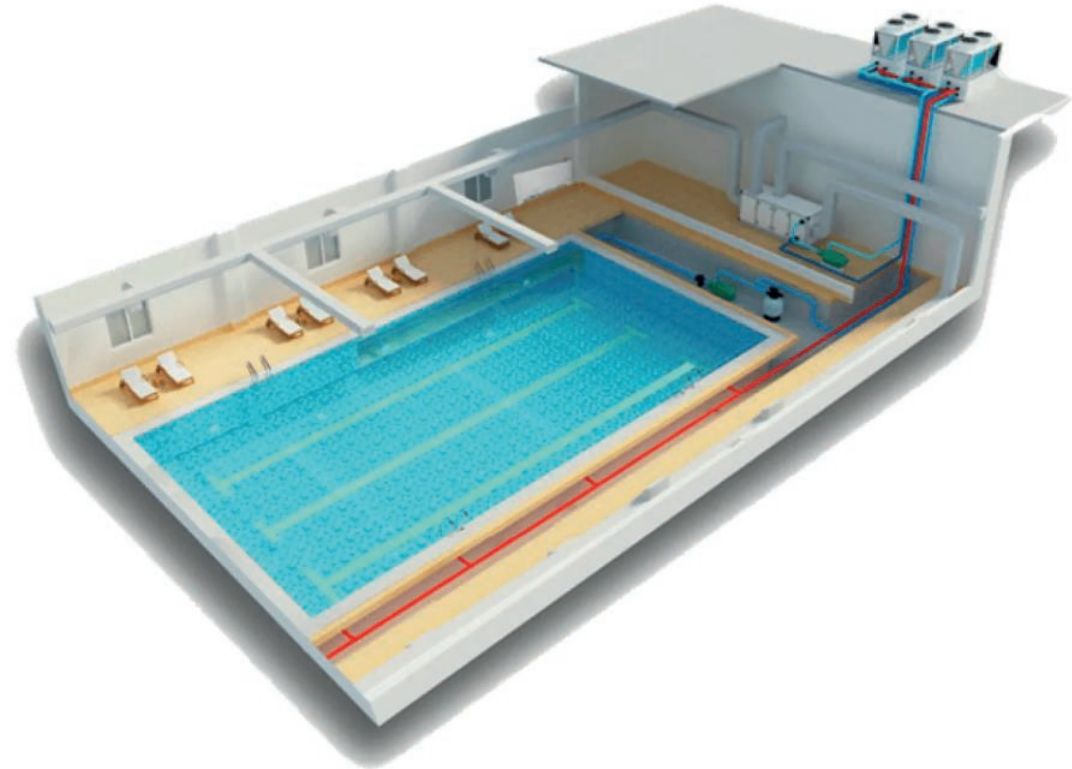
Interception

Ball and butterfly valves for efficient fluid handling



Dosage

Diaphragm and ball control valves for precise and efficient flow rate setting





Reconnecting with Nature in Cities

Urbanization and the rapid pace of development are creating a growing disconnection from nature, distancing us from the sources of our food, water, energy, and material goods. By 2050, it is projected that %64.1 of the population in developing countries and %85.9 in developed countries will live in cities.

At AMWAJ ALMOHEET, we recognize that nature is the essence of life it is our foundation, nourishment, comfort, and greatest resource. To secure the future of human societies, we must fully acknowledge the invaluable role of nature in our decision-making.

We are committed to delivering landscape designs that respect and integrate the natural environment, creating spaces that invite people to reconnect with and learn from nature.

Health and Recreation

A swimming pool can serve as a vital space for promoting health and well-being across physical, mental, and social aspects. Key factors in maximizing its benefits include easy access and the presence of nearby green, open spaces that enhance the overall experience.

To be truly effective, swimming pools should be pleasant and appealing to all senses. A well-designed, swimming-friendly environment encourages independence and promotes a healthy lifestyle by making physical activity more accessible. Additionally, swimming fosters emotional well-being by providing opportunities for social interaction and engagement in open spaces.



The heart of Europe cote d'azur



VOCO
by Marriott



Uniqueness



VOCO
AN IHG HOTEL

We solve complex challenges through innovative and unique designs that enhance the quality of life in the community.



The background of the slide is a photograph of a rooftop terrace. In the foreground, there is a large, rectangular swimming pool with clear blue water. To the right of the pool, there is a white-walled terrace area with a small table and four chairs set for a meal. The terrace overlooks a vast body of water, likely the sea, under a soft, hazy sky at sunset or sunrise. The overall color palette is dominated by blues, whites, and warm, muted tones from the sky.

Client-Focused

In today's business climate, best practices and financial analyses are often narrowed down to short-term gains, limiting true opportunities. These approaches can be misleading, preventing businesses from seeing long-term potential

At AMWAJ ALMOHEET, we are committed to delivering professional and superior service, working closely with our clients and stakeholders to ensure outstanding results that go beyond conventional standards



OUR CLIENTS



The Heart Of Europe



VOCO
AN IHG HOTEL

PSE CONTRACTOR

(Cod d'azur)



The Heart Of Europe

(Cod d'azur)



VOCO[™]
AN IHG[®] HOTEL



VOCO[™]
AN IHG[®] HOTEL



VOCO[™]
AN IHG[®] HOTEL

The Heart Of Europe

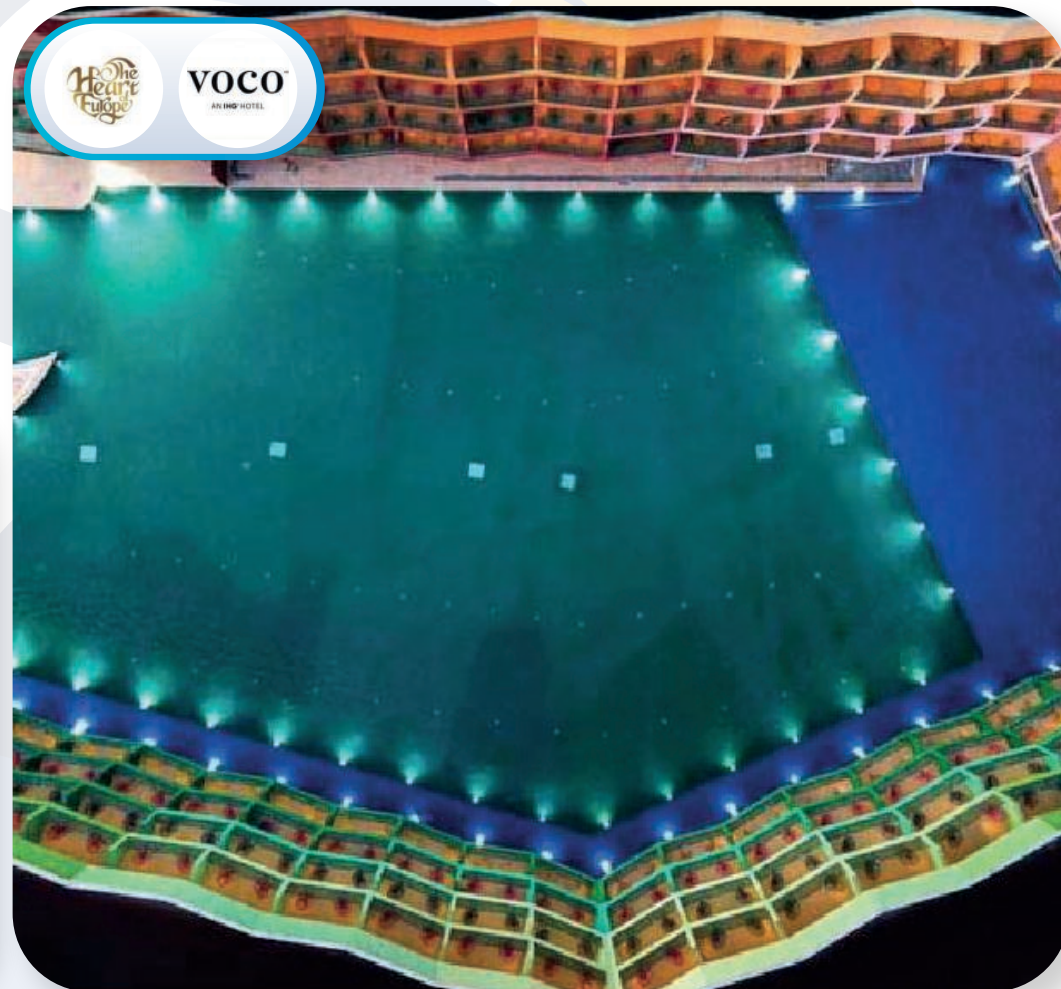
(Cod d'azur)



VOCO[™]
AN IHG[®] HOTEL



VOCO[™]
AN IHG[®] HOTEL



VOCO[™]
AN IHG[®] HOTEL

The Heart Of Europe



VOCO
AN IHG HOTEL

End Suite



Pool Constrcution Series



VOCO
AN IHG HOTEL

End Suite



VOCO
AN IHG HOTEL



VOCO
AN IHG HOTEL



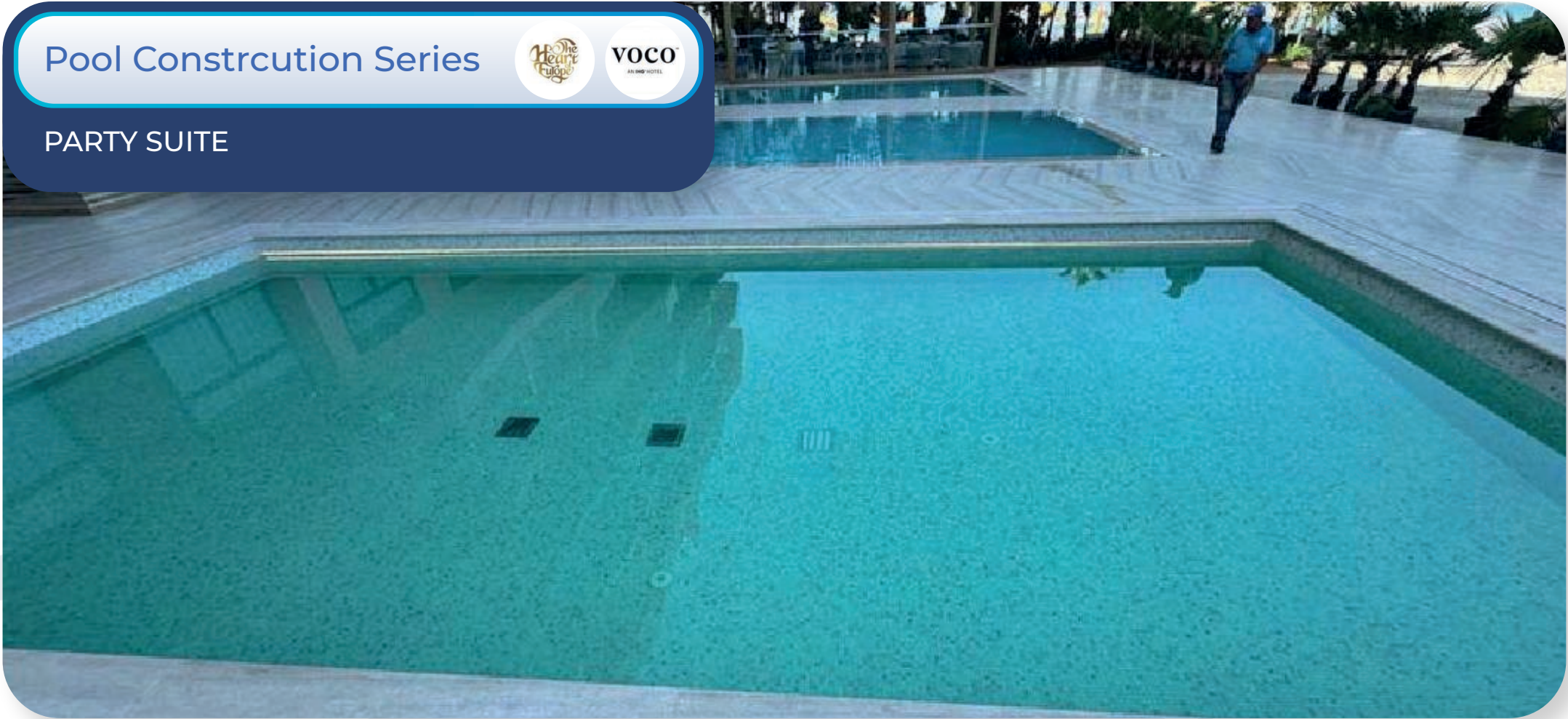
VOCO
AN IHG HOTEL



Pool Constrcution Series



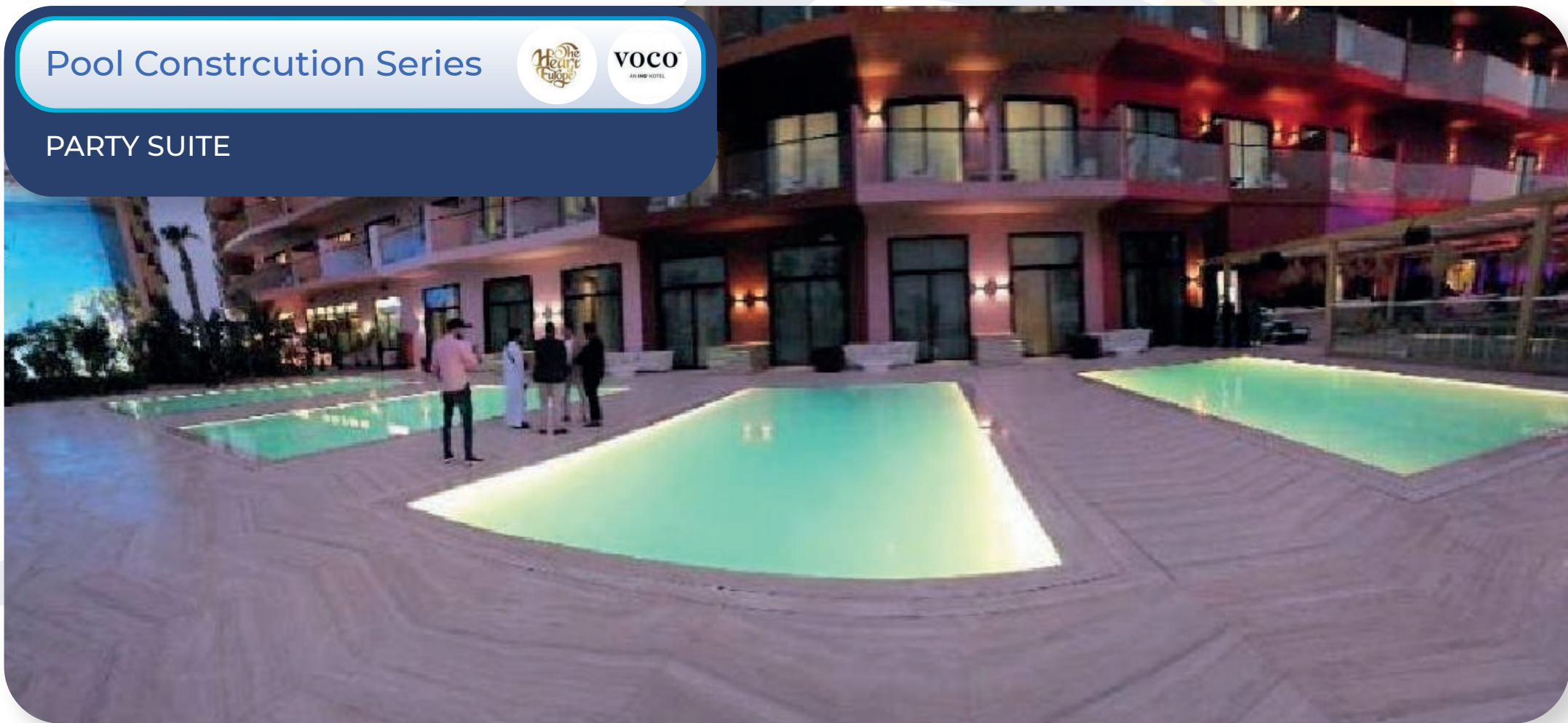
PARTY SUITE



Pool Constrcution Series



PARTY SUITE



Pool Constrcution Series



VOCO
AN IHG HOTEL

PARTY SUITE



VOCO
AN IHG HOTEL



VOCO
AN IHG HOTEL



THE HEART OF EUROPE



VOCO
AN IHG HOTEL

END SUITE



OST CONSTRUCTION



Germany Resort



THE HEART OF EUROPE POOL SERIES

PARTY SUITE



Crafting Dream Pools



ARCHI LAB CONSULTANTS



RENDERS ENG CONSULTANTS



MR/HUSSAIN MOHAMED ALBANNA



ATRIUM ARCHITECTURAL & ENGINEERING
CONSULTANCY



CLINTE : MR-AMIR ALANSARY



ARABIAN RINCHES



ARABIAN RINCHES

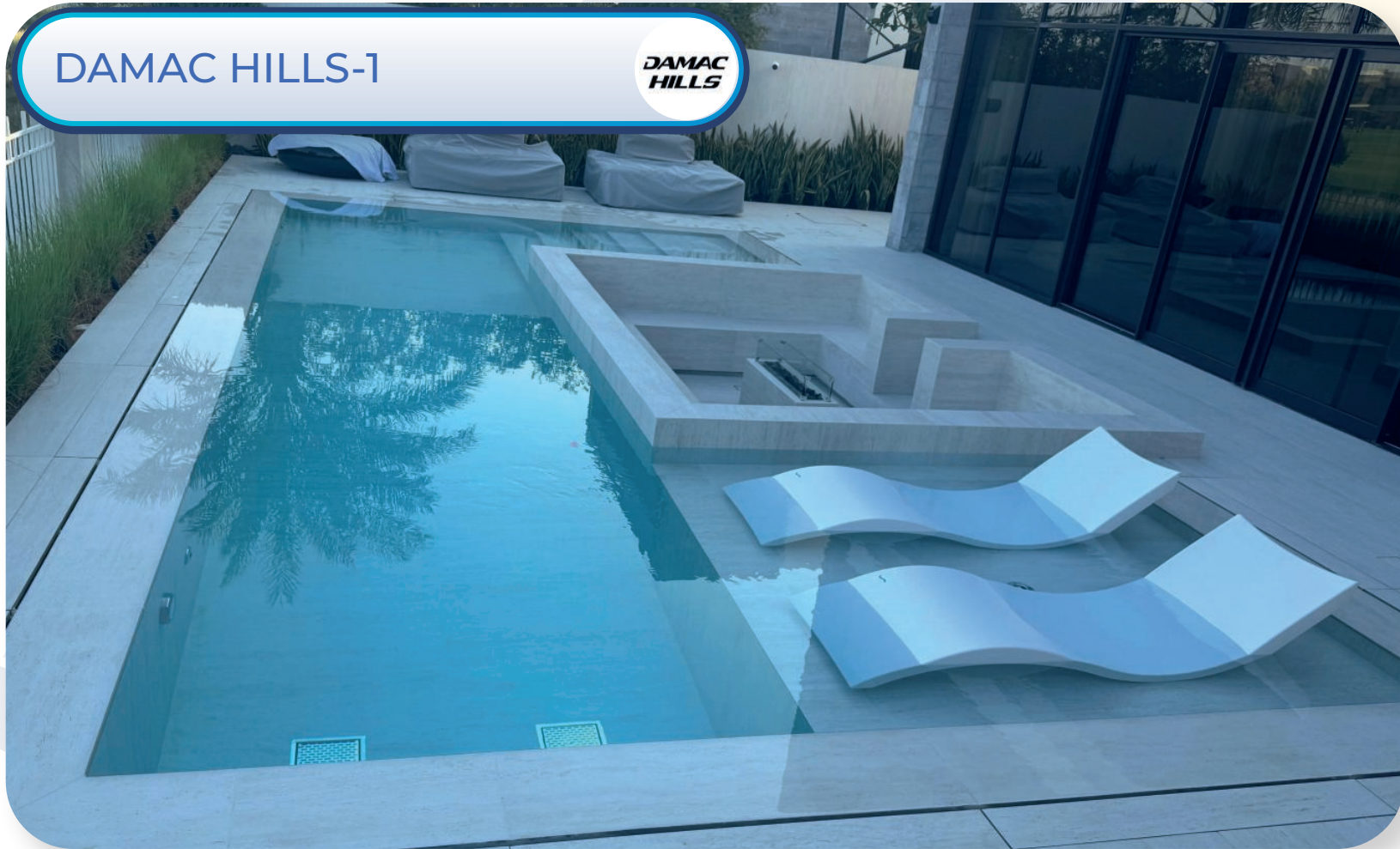


ARABIAN RINCHES



DAMAC HILLS-1

**DAMAC
HILLS**



DAMAC HILLS-1

**DAMAC
HILLS**



DAMAC HILLS-1

**DAMAC
HILLS**

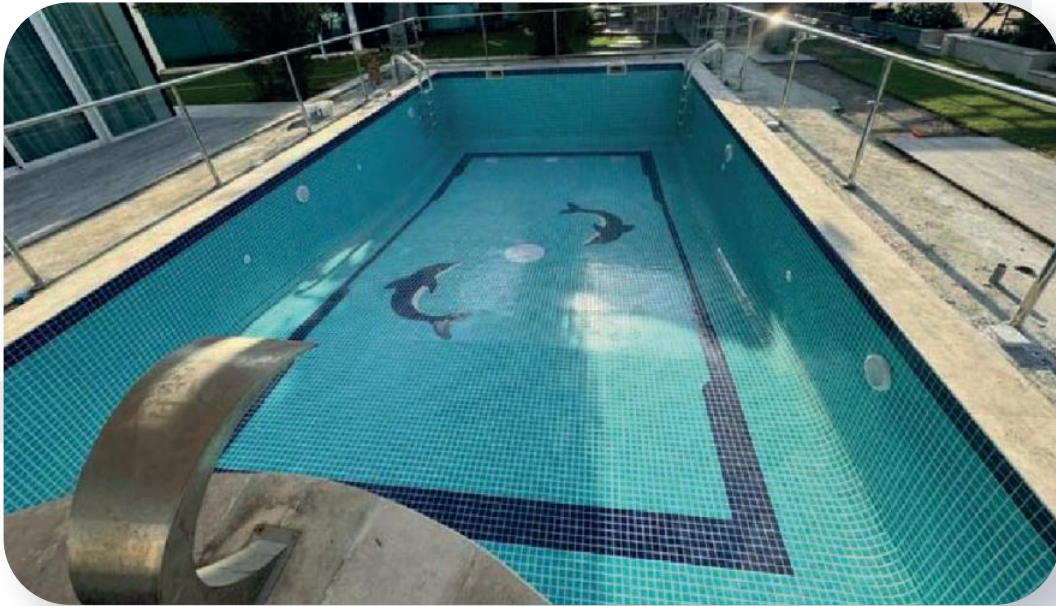


SHK/NAHLA ALQASSMI



ALSAHEL CONSLUTANT ENG

MR/MIHRAB MOHAMED



LOU\LOU\A BEACH

HOTEL AND Resort



LOU\LOU\A BEACH

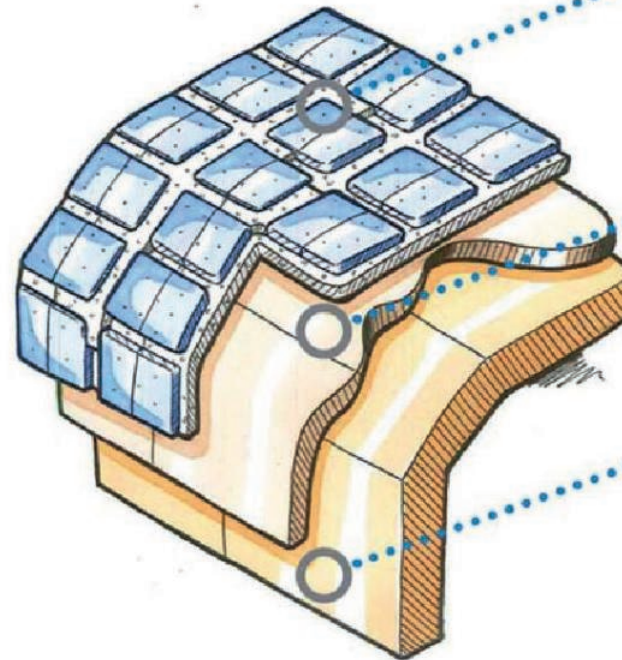
HOTEL AND Resort



LOU\LOU\A BEACH

HOTEL AND Resort

PRE-FORMED COMPOSITE POOL SHELL STRUCTURE



PORCELAIN CERAMIC MOSAIC TILE:

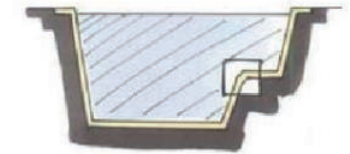
The internal finish is a hand applied mosaic tile finish, using epoxy grout to maximize in-use service life as well as providing the choice of a wide range of colours and styles.

EPOXY LAMINATE:

The inner layer is a 2 part, reactive epoxy system. This proprietary system cures to form an Epoxy laminate which completely prevents exposure of the GRP to pool water and associated chemicals.

GRP (Glass Reinforced Plastic):

The GRP outer body consists of spray applied, high performance resins reinforced with woven glass fibres.



It is the composite structure of the 3 materials working together which provides the unique properties of the absolute-pools Pre-formed pool shell.

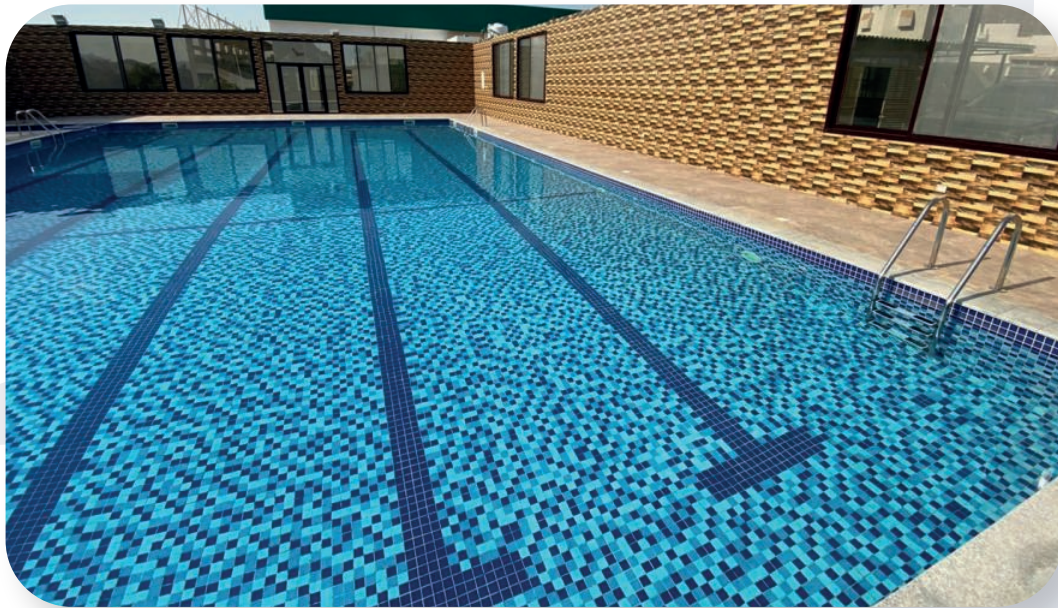
ATRIUM ARCHITECTURAL &
ENGINEERING CONSULTANCY



CLINET/MR. ISMAIL ALNSHASH



MASAFI CLUB



SHK/RASHID AL NUAIMI



SHK/MOHAMED KHALIFA ALMULLA



SHK/HAMED ALMIGRN



SAUNA ROOM AND WOOD WORK



SAUNA ROOM AND WOOD WORK



SAUNA ROOM AND WOOD WORK



STEAM ROOM WORK



SHK/MOHAMED BIN ALI



SHK/MOHAMED BIN ALI



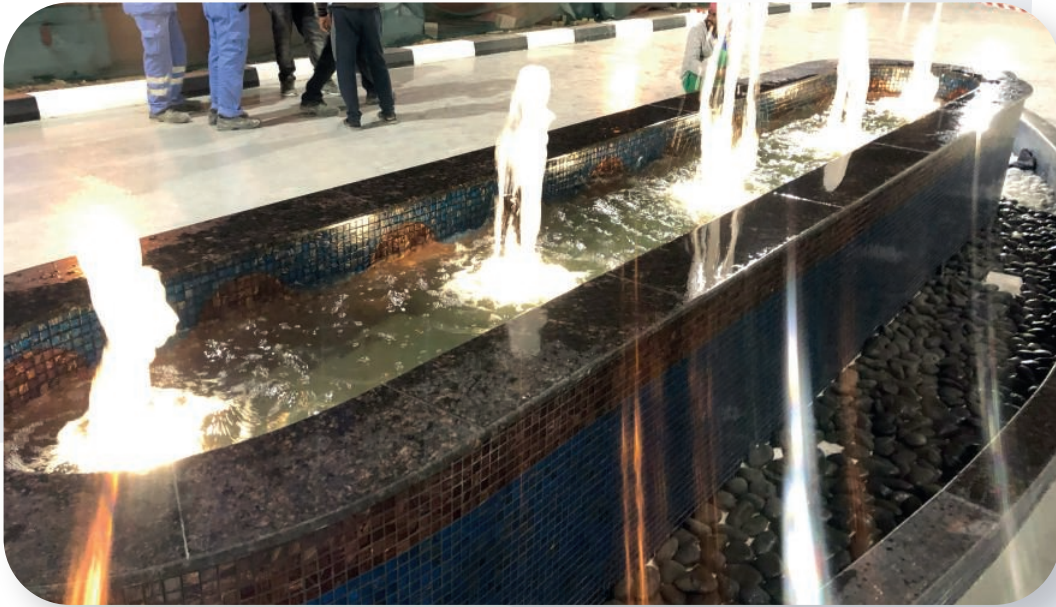
SHK/MOHAMED BIN ALI



بلدية دبي
Dubai Municipality



بلدية دبي
Dubai Municipality



Eng. Adnan Saffarini Office



Architects & Engineering Consultants

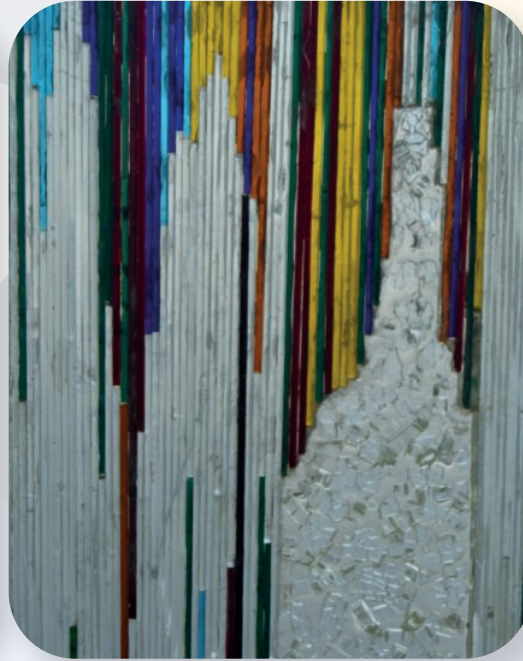
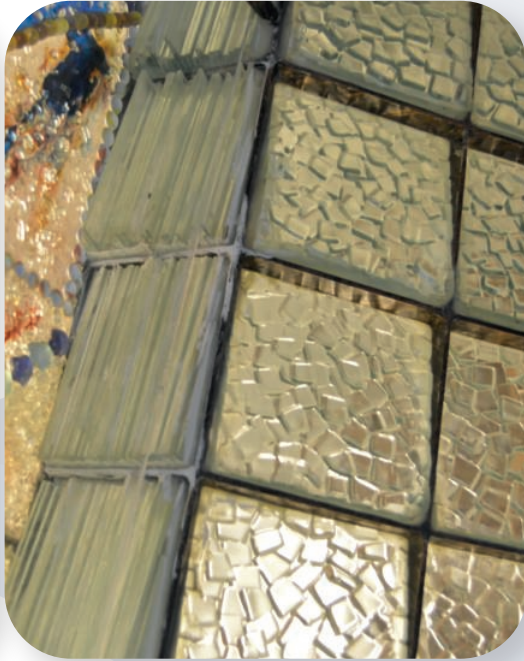


ART WORKS

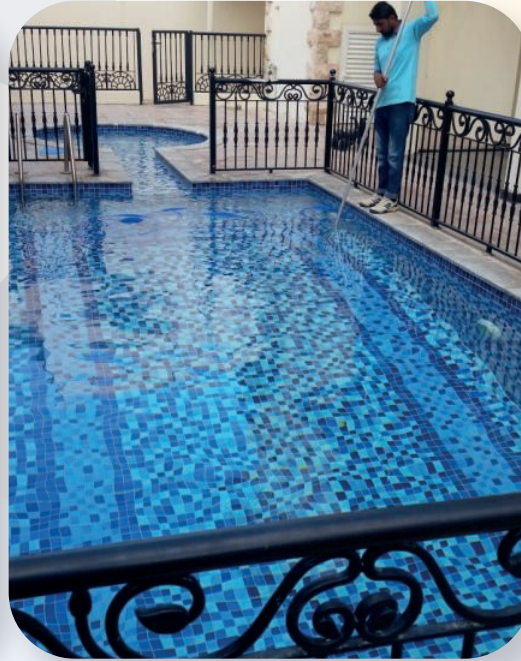
SHK/MOHAMED BIN ALI



ART WORKS



ART WORKS



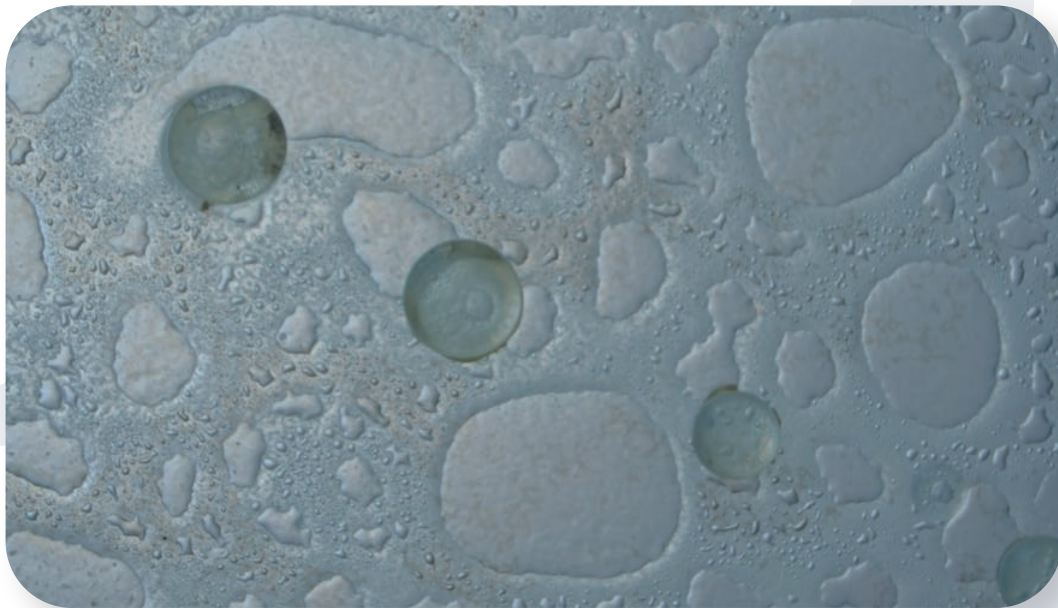
ART WORKS

SHK/MOHAMED BIN ALI



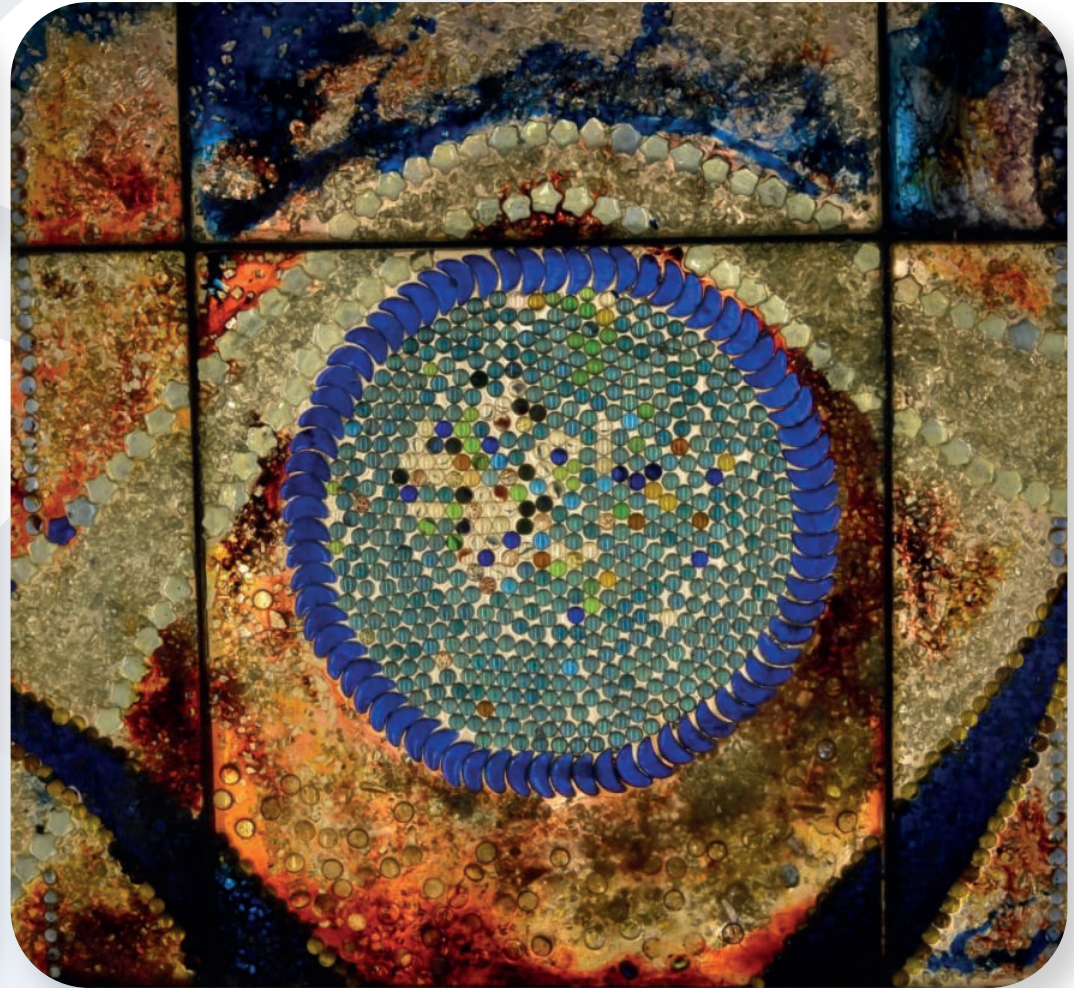
ART WORKS

SHK/MOHAMED BIN ALI



ART WORKS

SHK/MOHAMED BIN ALI



Shk/ Rashid bin mohamd bin ali



CREATIVE EXPRESSION



SHK/MAGED ALSHAMSY



SHK/MOHAMED BIN ALI



SHK/MOHAMED BIN ALI



CONSTRUCTION SITE



CONSTRUCTION SITE



CONSTRUCTION SITE



BUILDING WORLD-CLASS

SWIMMING SPACES



Pipe Line Installation Series



Building Your Oasis - Check

Out Our Latest Work!



On-Site Work Performed





Fakhry Engineering Cons.



Evolving Pool Standards: Safer & Smarter Designs



Ultrasonic swimming pool inspection



Plumbing works



From Proposal to Construction

AMWAJ ALMOHEET is a leading company in fluid management and conveyance. AMWAJ ALMOHEET has a specialist team that support designers, contractors, and contractors by offering:

I Consultancy

I Solutions

I Technology

CONSULTANCY

We carefully assess the needs of designers, contractors, and businesses to identify the most suitable solutions. From initial proposals to project completion, we collaborate closely with our partners, providing design expertise, technical guidance, and regulatory support to ensure optimal results.

Every project is unique, as each site presents different challenges ranging from hydro-geological conditions to regional and local regulations

If you have an ongoing project and would like advice, please contact:
WWW.AMWAJALMOHEET.COM .

ADVANTAGES

AMWAJ ALMOHEET means: L

Being able to choose a complete system | Assistance at the design stage | Compliance with regulations | High-performance materials | Easy and fast installation | Saving in installation times

Our team of technicians works closely with designers and companies from the Proposal to the Construction phase.

We build our service around our partner's needs.

Treatment and management of water within buildings.

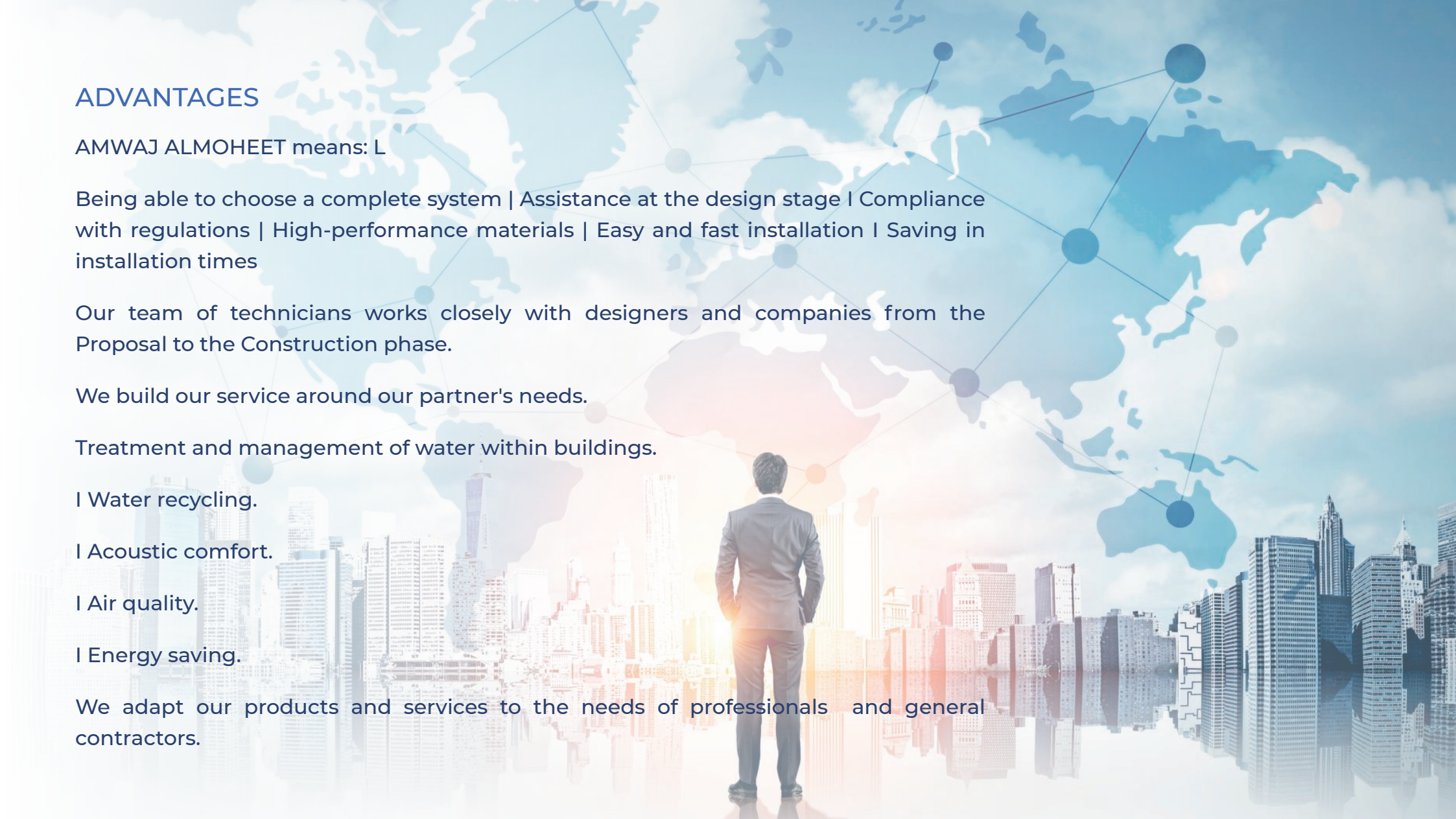
| Water recycling.

| Acoustic comfort.

| Air quality.

| Energy saving.

We adapt our products and services to the needs of professionals and general contractors.



TECHNOLOGY

We provide solutions complying with current regulations and on-site assistance during installation. Rely on an expert to be sure of a job done properly: planning the correct installation and choosing the most suitable solution saves installation time and guarantees the work of the company and designer.

For Conveyance, Interception, Dosing, Automation and Control product lines, please contact:

LIindustry Sales Technical Support

technical.fip@AMWAJALMOHEET.com

For Drainage, Shower and Toilet, Ventilation and Radiant Systems, Water and Heat Recovery product lines please contact

Building Sales Technical Support

Sales@AMWA.JALMOHEET.COM

CONVEYANCE

PVC-U and PVC-C systems

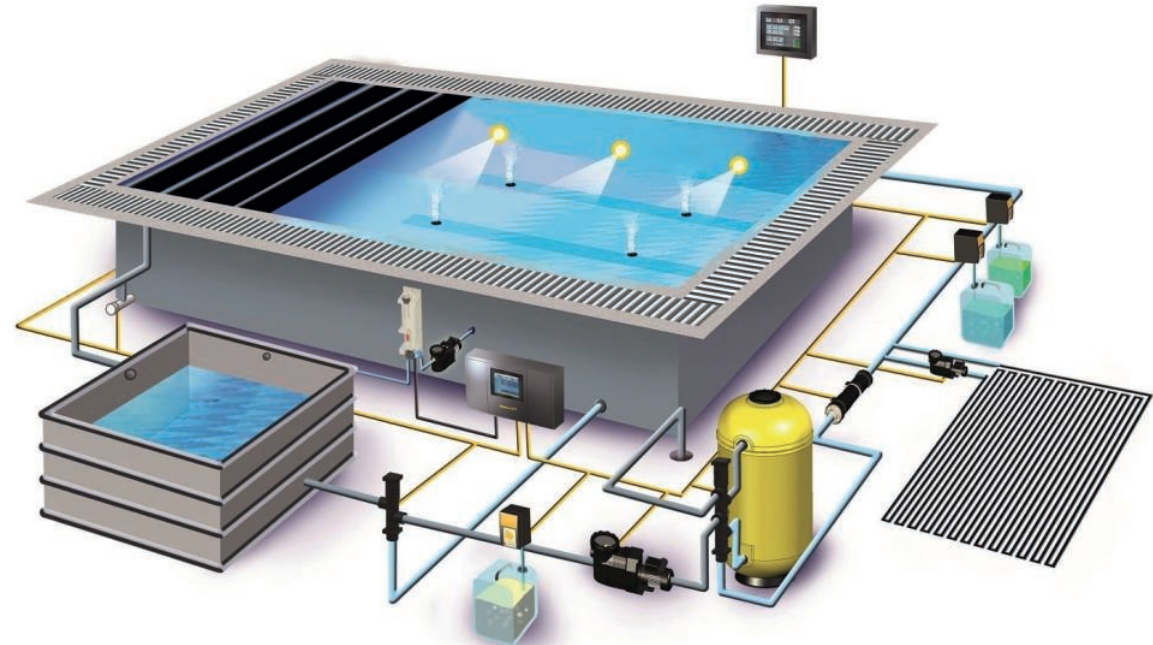
For conveying water in the recirculation process of the pool system

Application

Swimming pool water

Safe and effective water conveyance is crucial for the smooth operation of pools. According to UNI 10637:2016, properly designed recirculation system is necessary to achieve effective homogenization of the pool water. It specifies that pipes in type A and B pools (public pools) should be sized to maintain pressure drops of less than 4 mm/m for intake sections and less than 70 mm/m for outlet sections.

These guidelines can also be applied to type C and D pools (therapeutic and private pools) to ensure optimal water quality and hygiene. Utilizing a PVC-U piping and connection system allows for proper management of chlorinated water at room temperature.



maintenance
free



low energy con-
sumption



easy installation



anti-legionella

ADVANTAGES

Maintenance-free

The corrosion resistance provided by FIP brand polyvinyl systems allows for safe management of water Flows without the need for maintenance schedules.

Ease of installation

The practicality of chemical welding provides a distinct benefit during installation, as it eliminates the need for specialized, costly, and heavy tools for assembly.

High energy efficiency

The excellent surface finish of the polyvinyl chloride pipes, along with the optimized fluid dynamics of the connection components, reduces pressure losses and promotes consumption. low energy

High chemical resistance:

Polyvinyl chlorides provide excellent chlorine stability and act as a barrier against the growth of legionella bacteria.

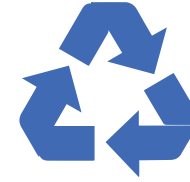




Low costs



Hygiene

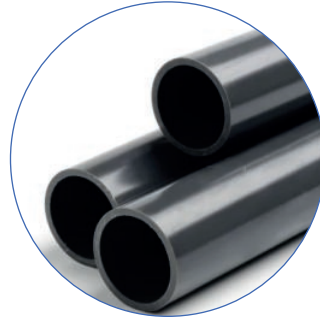


Sustainability

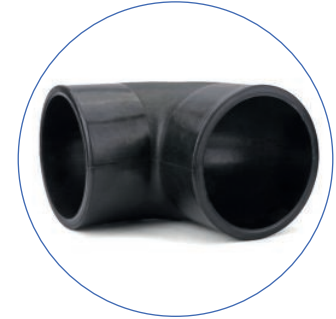


Thermal water solutions.

High temperatures and elevated concentrations of mineral salts necessitate a solution that can ensure high system efficiency while preserving the advantageous properties of the thermal waters. With the PVC-C pipe and connection system, available in sizes ranging from d16 to d225mm, it is possible to ensure the proper handling of any thermal water, even at high temperatures (up to 100 °C).



PVC-U pipes Size range d16400+ (mm) Nominal pressure PN 6, PN 10, PN 16 with water at 20 °C
Temperature range 0 °C TO 60 °C



PVC-U connections Size range d12d500 (mm) Nominal pressure PN 16 with water at 20 °C
Temperature range 0 °C TO 60 °C

Focus on

UNI 10637

Changes to the law and regulations governing swimming pools, from their construction to their usage and operation, have helped to diversify the range of components on offer to make pools for public use safer and more comfortable.

The huge popularity of water parks throughout the country, farm holiday centres and swimming pools installed in wellness centres and fitness rooms are further confirmation of the need for facilities that guarantee safety and comfort to users.

The UNI 10637 standard, initiated in 1997 and subsequently revised and supplemented, sets out guidelines for the design of filtration, circulation and recirculation systems in swimming pools in general.

The latest 2016 revision of this national standard harmonises it with the latest European standards, UNI EN 16582 and UNI EN 16713, differentiating their application between private and public pools.

UNI 10637:2016, used as a model for nearly all regions that now have a specific law for swimming pools, applies only to "public" swimming pools (type A and B) while for "domestic" pools (type D) the two European standards mentioned above apply, each divided into three parts.

For this reason, when designing a swimming pool facility for both public and private use, it is essential to follow the requirements of these standards to ensure high standards of efficiency and safety.



Public and private swimming pools, Sports and Spa centres, Aquaparks

WATER MANAGEMENT SYSTEM

Conveyance Interception Dosing	12
--------------------------------	----

AUTOMATION AND MEASUREMENT

Drainage Showers Toilets	16
--------------------------	----

ANCILLARY SERVICES

Drainage Showers Toilets	22
--------------------------	----

ENERGY EFFICIENCY

Ventilation and Radiant Systems Heat and Water Recovery	28
---	----

NO	CLIENT	YEAR	DESCRIPTION
1	DUBAI WORLD ISLAND	2020	THE BIGGEST POOL IN MIDDLE EST.
2	PSE CONT	2020	SWIMMING POOL
3	SHK/MOHAMED BIN ALI ALNUAIMI	1998 TO NOW	Swimming pool-water fall-rock ston -decoration and more
4	SHK/RASHED ALNUAIMI	1999	SEVERAL WORK
5	SHK/SALEM ALNUAIMI	2000	SWIMMING POOL
6	SHK/NAHLA ALQASSMI	2013	SWIMMING POOL BULDING
7	SHK/MOHAMED KHLIFA ALMOALA	2020	
8	SHK/SALEM ALNUAIMI	2009	
9	SHK/HAMAD ELMGRN	2017	
10	SHARJAH UNIVERSITY	2001	REPAIR
11	Zayed Military CITY	2008	SWIMMING POOL
12	KHLIFA BIN THAN	2015-16-17	SWIMMING POOL
13	ABD ALAZIZ BIN THAN	2002	SWIMMING POOL
14	MOHAMED KHLIFA ALMIRI	2002	SWIMMING POOL
15	ABD RAHMAN HARB	2013	SWIMMING POOL
16	.INJAZ ALMADINA CON	2012	SWIMMING POOL
17	SAID ALMAHRE	2004	SWIMMING POOL
18	FORWARD ENGINEERING	2007	SWIMMING POOL
19	BIN GHALIB CONT	2013	SWIMMING POOL
20	(UP (GREEN COMUNTY	2005	SWIMMING POOL
21	MAHMOUD ABO NAJMI	2014	SWIMMING POOL

NO	CLIENT	YEAR	DESCRIPTION
22	SOBHE SOKAR	2015	SWIMMING POOL
23	TARK ALRAIS	2014	SWIMMING POOL
24	IAS LOOTAH	2016-2018	SWIMMING POOL
25	BHATIA GENERAL CONT	2015-2017	SWIMMING POOL
26	MODERN BILDING CONT	12-13-14-2015	SWIMMING POOL +INTERIORDESIG
27	CAIRO CONT	2015-16-17-18	SWIMMING POOL
28	MAGED AHLE	2002	SWIMMING POOL
29	MAGED ALSHAMSI	2016	SW-P-FOUNTAIN
30	ALWALED CONT	2016-2017	
31	MOHAMED ALSHAMSI	2003	SWIMMING POOL
32	SHK/SALEM ALNIMI	2006	SWIMMING POOL
33	HUSAIN ALGABRI	2012	SWIMMING POOL
34	DR ALI MURAD	2014	SWIMMING POOL
35	HUSAIN ALHASHMI	2011	SWIMMING POOL
36	MOHAMED AL DOBIK		SWIMMING POOL
37	LOU LOU HOTEL GROU	2016	SWIMMING POOL
38	AHMAD ALMARHASI	2006	SWIMMING POOL
39	GOMA BIN MSHAR	2004	SWIMMING POOL
40	DR/MOSA	2002	SWIMMING POOL
41	ABO BAKR	2002	SWIMMING POOL
42	MOHAMAD ALFLASI	2016	SWIMMING POOL

NO	CLIENT	YEAR	DESCRIPTION
43	ABDL HAMED ELMOLA	2015	SWIMMING POOL
44	RAZANCO. BLD.CO		SWIMMING POOL
45	IESA HARIB	2003	SWIMMING POOL
46	CROWN CONSULT	2004	SWIMMING POOL
47	RENDERS ENGINEERING CONSULTANTS	2008	SWIMMING POOL
48	NEXT ENGINEERING CONSULTANTS		SWIMMING POOL
49	GERMAN ENGINEERING CONSULTING	2003	SWIMMING POOL
50	ADNAN SFSRINI		SWIMMING POOL
51	(DELTA ENGINEERING CONSULTANTS (CONSULTING ENGINEERS	2000	SWIMMING POOL
52	CIRCLE ENGINEERING CONSULTANTS	2015	SWIMMING POOL
53	AL HELAL ENGINEERING CONSULTANTS	2017	SWIMMING POOL
54	LOOTAH ENGINEERING CONSULTANTS		SWIMMING POOL
55	EAST ENGINEERING CONSULTANCY		SWIMMING POOL
56	AL AJAMI ENGINEERING CONSULTANTS		SWIMMING POOL
57	AL BURJ ENGINEERING CONSULTANTS		SWIMMING POOL
58	RIMAL ENGINEERING CONSULTANTS		SWIMMING POOL
59	FAKHRY CONSULT	2009-NOW	SWIMMING POOL
60	.ALTRATH ALASEEL CONT	2019-2024	
61	DAMAC PROPERTY		
62	EIMAR PROPERTY		
63	OST COUNSTRACION		

NO	CLIENT	YEAR	DESCRIPTION
64	NEW SYSTEM CONT		
65	GOLDEN SQUARE ENG		
66	ALKHWAJA CONSULT		
67	AROMA CONSULT		
68	ALSAHEEL CONSULT		
69	ARCHI LAB CONSULT		
70	MAZAYA CONSULT		
71	AL QANDEEL CONT		
72	DEYAAR CONSULT		
73	ATRUM CONSULT		
74	ALALA CONT		
75	ALBORJ ALALI CONT		
76	BIN GHALIB CONT		
77	AL SAHEL CONSLUT		
78	NATIONAL CONSLUT		
79	ALZAWRA PROPERTY		

A background image of a modern outdoor swimming pool at dusk. The pool is rectangular with a glass railing. To the right, there is a patio area with a large umbrella and some furniture. The scene is lit with warm, ambient light from the pool and surrounding area.

Our identity

In a rapidly changing world, with a growing population and a changing climate, water is one of our planet's most precious resources, one that we must use with greater awareness and sustainability. As a global leader in the industry that connects people with water and energy, AMWAJ ALMOHEET is ready to take on this challenge and to help in shaping a better tomorrow.

We offer water and energy management systems all over the world, and it is the specific knowledge and experience of our people in the field that makes all the difference to our customers, with whom we work closely to deliver reliable performance, today and tomorrow.

AMWAJ ALMOHEET develops personalised solutions and supports customers, from ideation to project execution, working together to define the ideal solution that can meet their needs and objectives.

A dense network of distributors, structured to guarantee not only the availability of products but also direct support and advice, is one of the many advantages that AMWAJ ALMOHEET delivers to its customers





Thank you!



To visit our website,
please scan the QR code.

☎ **0508992628 - 0558565549**
🌐 **WWW.AMWAJALMOHEET.COM**
✉ **SALES@AMWAJALMOHEET.COM**

